

# CATHERINE O'DONNELL

Sydney Contemporary 2023





Catherine O'Donnell's drawings depict suburban architecture with stunning verisimilitude. They are full of connection and disconnection, sameness and difference; examining urban living as a site of complexity. Her works celebrate the uncelebrated 'everyday', with a particular interest in the way that vernacular architecture and streetscapes of places we regularly inhabit become recessed into our minds like wallpaper – they are at once visible and invisible. O'Donnell's drawings, whilst uninhabited, still capture traces of human intervention with narrative elements embedded in the commonplace structures.

O'Donnell has held solo exhibitions at Carriageworks, Tweed Regional Gallery & Margaret Olley Art Centre, Orange Regional Gallery, Grafton Regional Gallery, Blacktown Art Centre, Campbelltown Arts Centre, Murray Art Museum Albury, Penrith Regional Gallery, Shoalhaven Regional Gallery, the National Art School, and the Pataka Museum in New Zealand. O'Donnell has been awarded the Jacaranda Acquisitive Drawing Award (2022), KAAF Art Prize (2021), Gosford Art Prize (2020), Waverley Art Prize (2020), Terrence and Lynette Fern Cité Internationale des Arts Residency Fellowship (2017), Hazelhurst Art on Paper (2015), City of Hobart Art Prize (2011), and the Albury Art Prize (2009) where she was awarded First Prize International Art Residency.

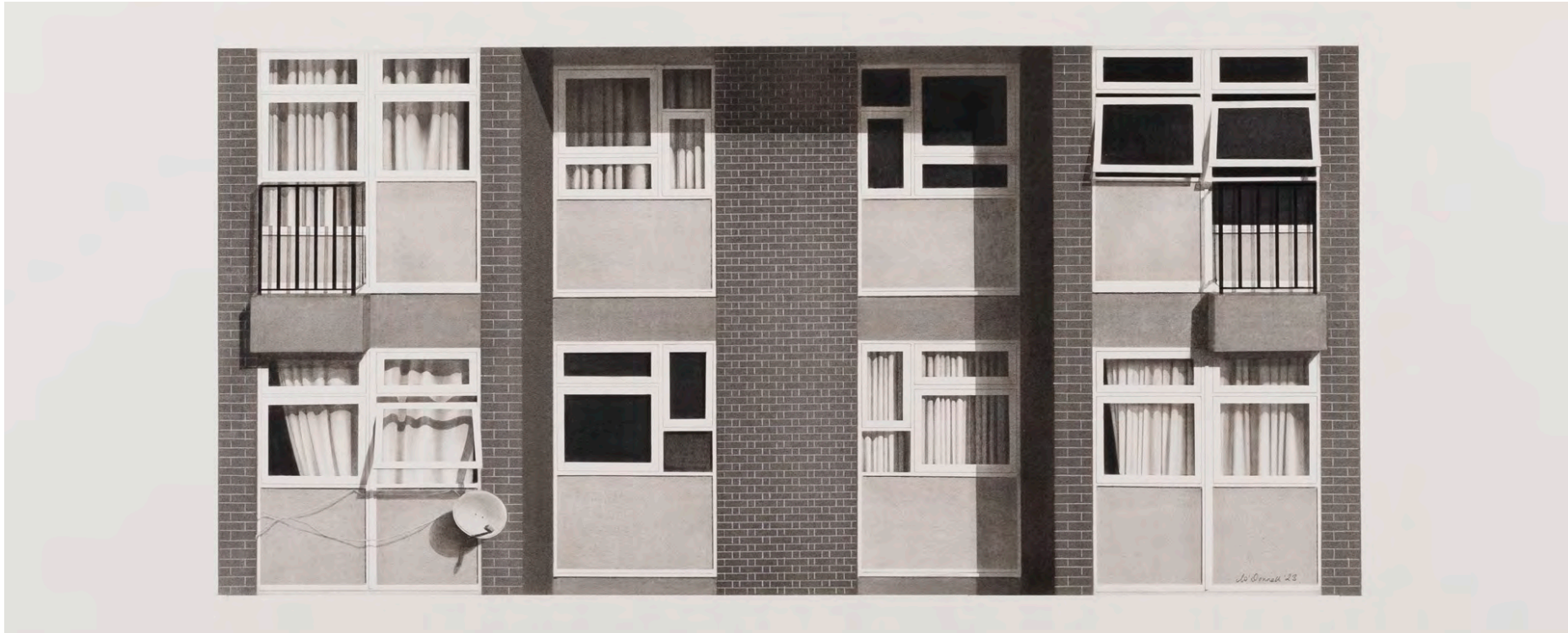
O'Donnell's works have been acquired by notable collections including the Art Gallery of New South Wales, Parliament House Art Collection, Artbank, Penrith Regional Gallery, Jacaranda Acquisitive Drawing Award Collection, Grafton Regional Gallery, Murray Art Museum Albury, Kedumba Collection of Contemporary Drawings, Pataka Museum in Porirua in New Zealand, Blacktown City Council, Mosman Art Gallery, Museum of Brisbane, and numerous private collections.



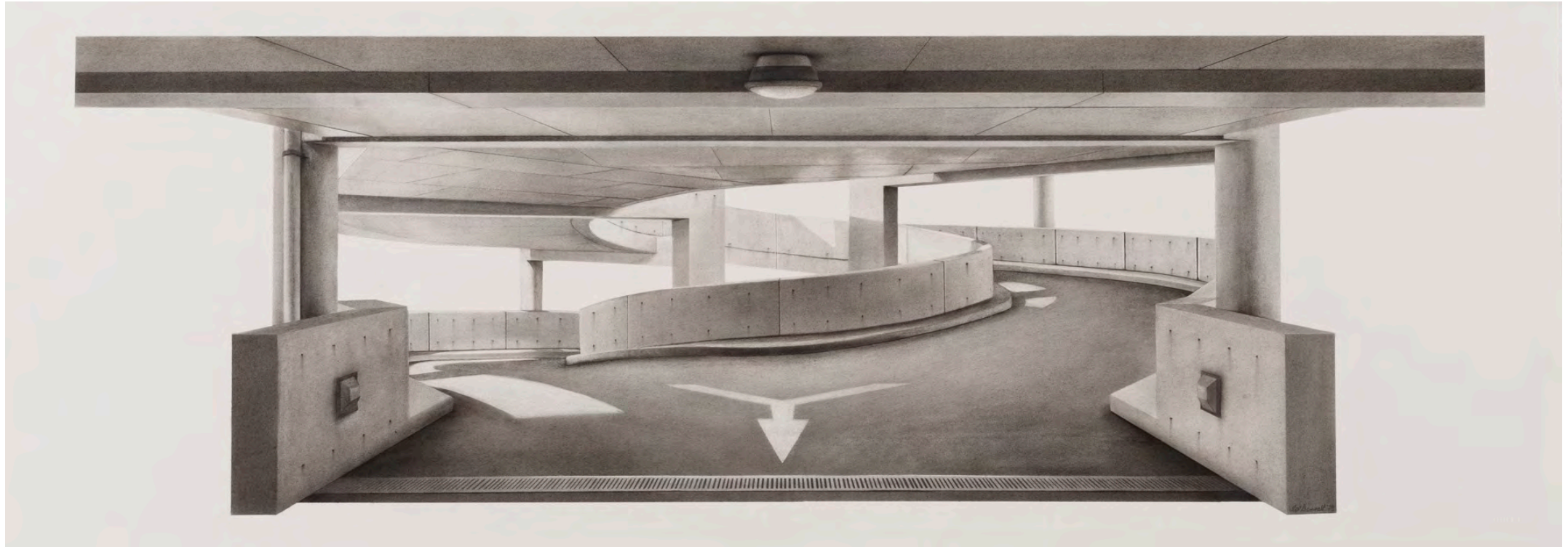
'High Rise #2', 2023, charcoal and graphite on paper, 115 x 46 cm, framed with museum glass, \$9,500

Terms of sale: 10% non-refundable deposit on reservation. Balance on collection. Prices as of September 2023. All prices listed may change without notice. All prices include GST. Credit card payments incur a 2% fee.

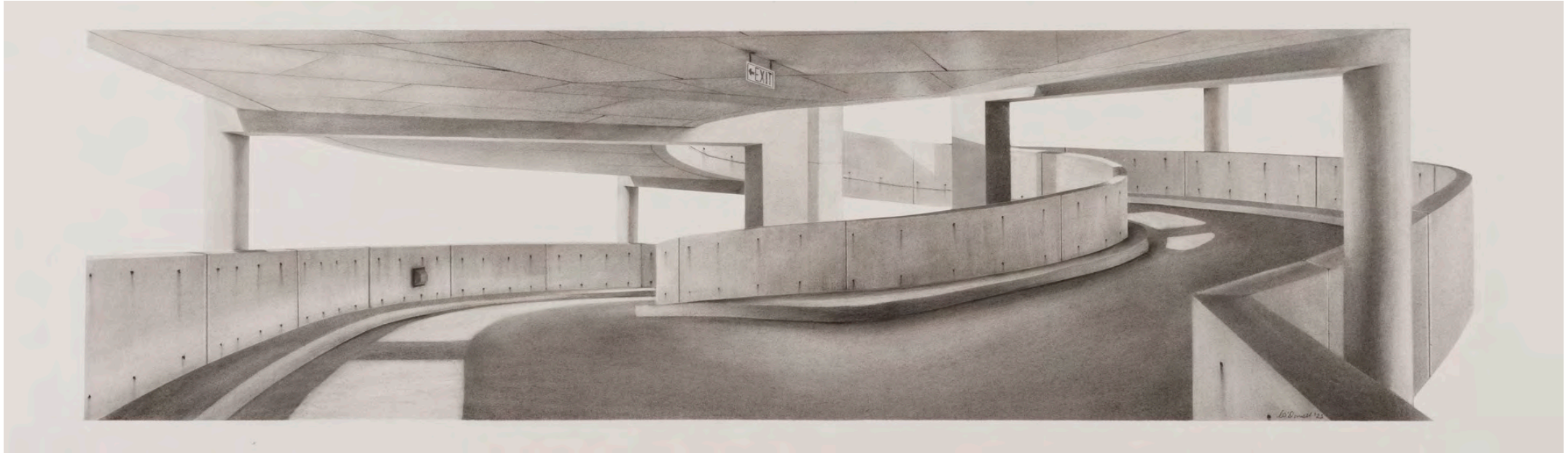




'Estate Living', 2023, charcoal and graphite on paper, 49 x 100 cm, framed with museum glass, \$8,200



'Exit #1', 2023, charcoal on paper, 50 x 114 cm, framed with museum glass, \$9,800

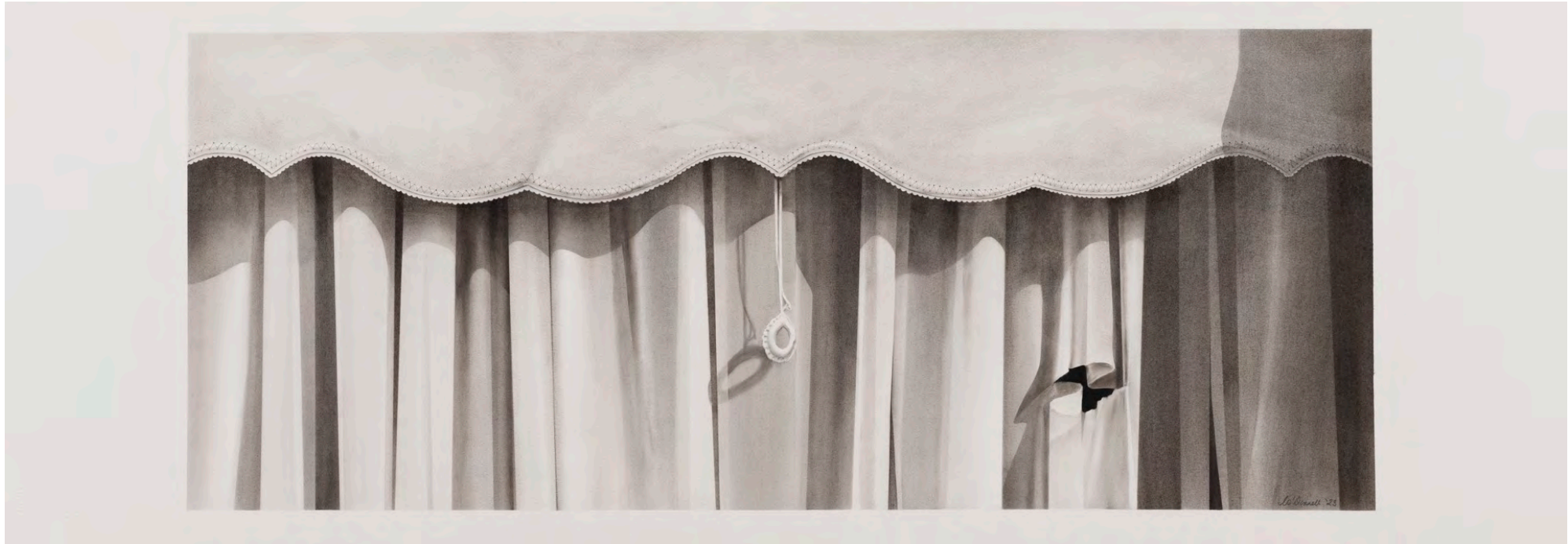


'Exit #2', 2023, charcoal on paper, 50 x 114 cm, framed with museum glass, \$9,800





'Sunday's shadow', 2023, charcoal on paper, 40 x 110 cm, framed with museum glass, \$8,800



'Waiting', 2023, charcoal on paper, 50 x 114 cm, framed with museum glass, \$9,800





‘Afternoon Reflections’, 2023, charcoal on paper, 63 x 84 cm, framed with museum glass, \$8,600



‘Afternoon’, 2023, charcoal on paper, 64 x 89 cm, framed with museum glass, \$8,800

Terms of sale: 10% non-refundable deposit on reservation. Balance on collection. Prices as of September 2023. All prices listed may change without notice. All prices include GST. Credit card payments incur a 2% fee.



**'Morning Light', 2023, charcoal on paper, 63 x 90 cm, framed with museum glass, \$8,800**

Terms of sale: 10% non-refundable deposit on reservation. Balance on collection. Prices as of September 2023. All prices listed may change without notice. All prices include GST. Credit card payments incur a 2% fee.





'Striped Curtains', 2023, charcoal on paper, 55 x 90 cm, framed with museum glass, \$7,900

Terms of sale: 10% non-refundable deposit on reservation. Balance on collection. Prices as of September 2023. All prices listed may change without notice. All prices include GST. Credit card payments incur a 2% fee.



‘Triple Shadows’, 2023, charcoal on paper, 55 x 86 cm, framed with museum glass, \$6,900

Terms of sale: 10% non-refundable deposit on reservation. Balance on collection. Prices as of September 2023. All prices listed may change without notice. All prices include GST. Credit card payments incur a 2% fee.





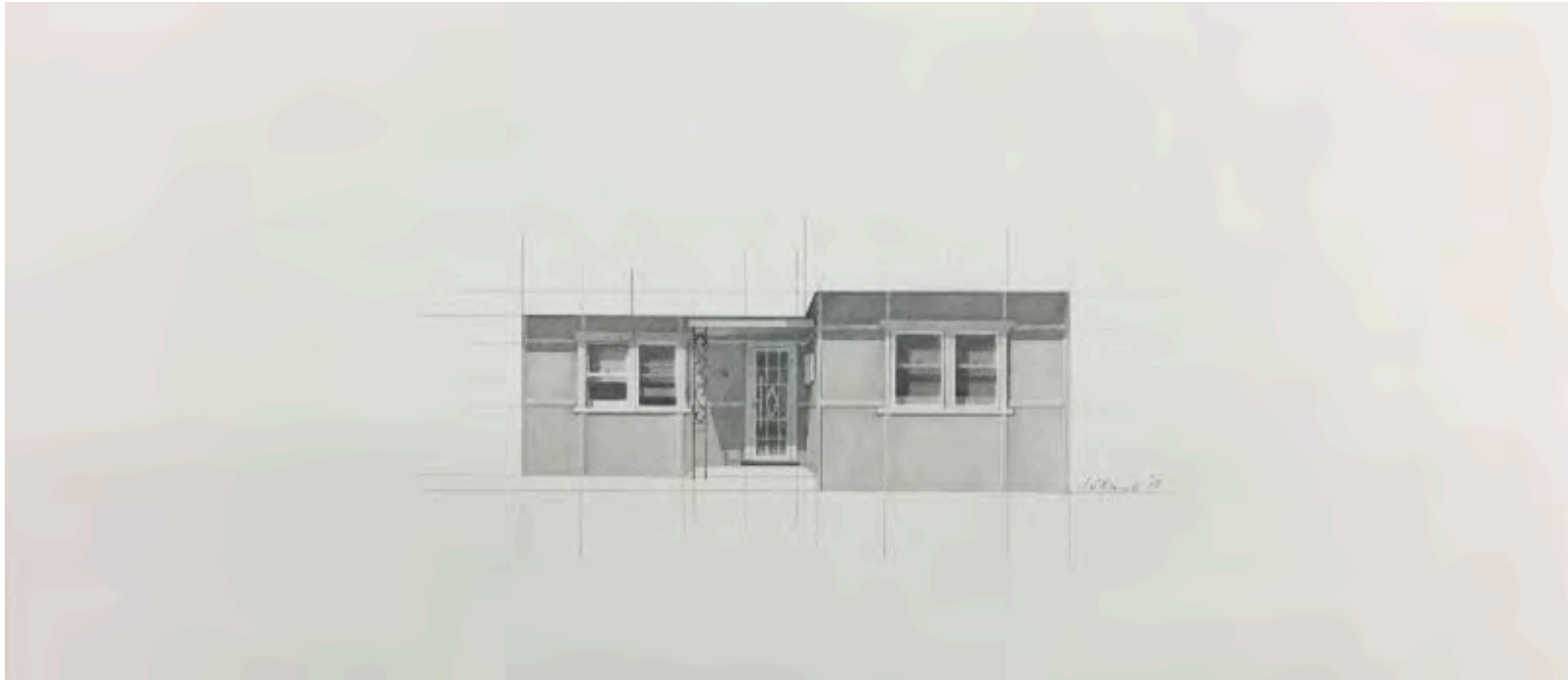
'Keep Clear', 2023, charcoal on paper, 55 x 86 cm, framed with museum glass, \$7,600

Terms of sale: 10% non-refundable deposit on reservation. Balance on collection. Prices as of September 2023. All prices listed may change without notice. All prices include GST. Credit card payments incur a 2% fee.





‘Sydney Fibro Series 4’, 2017, charcoal on paper, 26 x 56 cm, unframed, \$4,800



'Sydney Fibro Series 6', 2017, charcoal on paper, 26 x 56 cm, unframed, \$4,800



'Unit #2', 2022, charcoal and graphite on paper, 59 x 34 cm, framed with museum glass, \$5,900





'Unit #38', 2022, charcoal and graphite on paper, 82 x 35 cm, framed with museum glass, \$6,900

Terms of sale: 10% non-refundable deposit on reservation. Balance on collection. Prices as of September 2023. All prices listed may change without notice. All prices include GST. Credit card payments incur a 2% fee.



'Golden House Series: House 1', 2022-23, stereolithographic model and gold leaf, 13 x 26 x 33 cm (size varies), edition of 3, \$4,800



'Golden House Series: House 2', 2022-23, stereolithographic model and gold leaf, 13 x 26 x 33 cm (size varies), edition of 2, \$4,800





'Golden House Series: House 3', 2022-23, stereolithographic model and gold leaf, 13 x 26 x 33 cm (size varies), edition of 2, \$4,800



'Golden House Series: House 4', 2022-23, stereolithographic model and gold leaf, 13 x 26 x 33 cm (size varies), edition of 2, \$4,800



'Golden House Series: House 6', 2022-23, stereolithographic model and gold leaf, 13 x 26 x 33 cm (size varies), edition of 2, \$4,800